

Blommer strengthens efforts to protect and restore forests in our cocoa supply chain.

Deforestation is a global challenge and a major threat to the environment and communities that depend on forests for their livelihoods. Particularly in the two major cocoa-producing countries of Côte d'Ivoire and Ghana where significant deforestation has taken place since the early 2010s, largely driven by the expansion of agricultural commodities, including cocoa.

To address deforestation and promote sustainable cocoa production, Fuji and Blommer are proud to [announce](#) two exciting new sustainability partnerships.

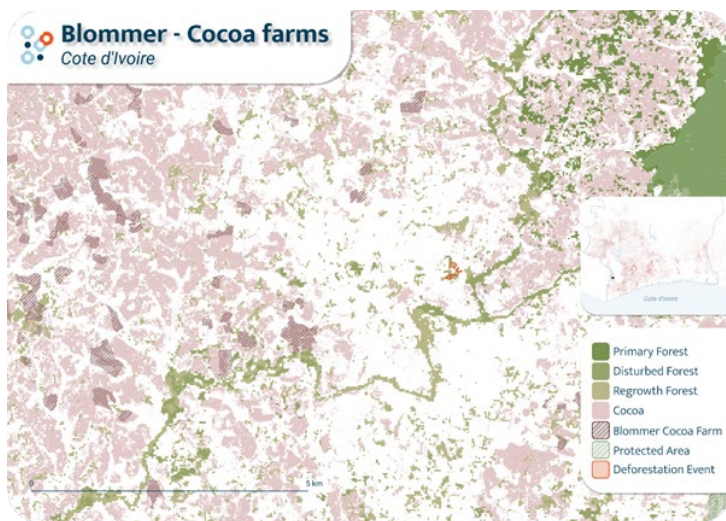
These two new initiatives will strengthen the Fuji Group's efforts to eradicate deforestation risk from their cocoa supply chain and promote reforestation with a primary focus on Blommer's direct cocoa farming network. These actions are aligned with the Cocoa and Forest Initiative (CFI), a multi-stakeholder platform that aims to end deforestation and restore forests in the cocoa sector.

Blommer partners with Satelligence to fight deforestation in its global cocoa supply chain with cutting edge technology

Blommer has teamed up with [Satelligence](#), the world leader in geospatial forest monitoring, to assess and address deforestation risk in Côte d'Ivoire, Ghana, and Ecuador.

To provide Blommer with the data needed to carry out their monitoring and assessments, Satelligence combines satellite imagery, AI-driven algorithms, and ancillary data on cocoa farm locations using a thorough methodology, verified by E&Y.

The picture that emerges will bolster Blommer's sustainability strategy with landscape and farm level insights that include canopy cover change, carbon loss/gain on and around cocoa farms, risk assessments, identification of shade cocoa areas, and carbon sequestration monitoring.



A real-time risk alerting system is also being implemented to enhance Blommer's capacity to swiftly address the drivers of deforestation and forest degradation. For Blommer, the partnership with Satelligence is also an important milestone to ensure compliance with upcoming legislations.

Satelligence's initial assessment covers around 50,000km² across Côte d'Ivoire, Ghana, and Ecuador. The first report that focused on land cover change between 2001 and 2021, as well as a Forest Loss Risk Index (FLRI) concluded that "no clear trends are visible from year to year for deforestation" in Blommer's cocoa supply chains.

The fact that deforestation has remained consistently low in their supply chains, reflects on Blommer's continuous efforts to fight deforestation, and deliver sustainable cocoa to its customers. This is encouraging and reinforces the importance of having a robust strategy for monitoring environmental risk in global supply chains, supported by state-of-the-art monitoring tools.

Fuji and Blommer partner with AgroMap to contribute to the reconstitution of the Ivorian forest cover

Fuji and Blommer have also recently partnered with [AgroMap](#), an Ivorian company specializing in nature-based solutions, to progress on their commitment to plant 1 million trees in cocoa producing origins affected by deforestation by 2030. Through this partnership, Fuji and Blommer will plant about 300,000 multipurpose forest and fruit trees in Côte d'Ivoire between 2023 and 2025 and promote cocoa agroforestry and community reforestation in their supply chain.



The project also targets to diversify the income of cocoa farming households through promoting Income Generating Activities and distribute multipurpose trees with a focus on improving soil health. Through this project, Fuji and Blommer aim to strengthen the resilience of producers and communities affected by climate change and contribute to carbon sequestration. In addition, the trees will provide vital habitat for local wildlife and participate in protecting biodiversity.

Fuji and Blommer understand the importance of making a positive impact on the communities and ecosystems where they operate, through nature-based solutions. "Our commitment to sustainability and responsible production is an integral part of our mission, and we are proud to be taking these steps to deliver impact in major cocoa origins." Said Andrew Harner, Vice President of Sustainability at Blommer. Fuji and Blommer believe these initiatives will continue to support providing their customers with high-quality, sustainably made products that they can feel good about supporting.

See Fuji Oil Holdings press release here: https://www.fujioilholdings.com/en/assets/20230320_news_e.pdf

About Satelligence

Satelligence is a geospatial sustainability company. Their curated and E&Y verified insights on deforestation, supply chains, land degradation, and downstream scope 3 emissions make product journeys and investment portfolios sustainable, from tree to shelf. For more information, please visit their website, or their [Linkedln page](#).

About AgroMap

[Agro-Map](#) is an Ivorian company founded in 2018 whose mission is to promote sustainable agricultural practices that combat climate change. Environmental and social issues are at the heart of their approach. Agro-Map's core competency lies in their community-based approach to agroforestry and reforestation. They also intervene in the realization of feasibility studies and the implementation of carbon credit projects. Their objective is to reconcile agriculture and forest in order to maintain a microclimate that ensures a better balance of the ecosystem in agricultural production areas. To do this, Agro-Map uses satellite and GIS technology to identify land use in intervention areas and develops land management action plans with stakeholders. For better monitoring of planted trees, AGRO-MAP has developed a web and mobile application called "AKIDOM".